

# Important Information!

[Upgrading](#)  
[Authentication](#)

Pre-Installation Steps:

[SQL Server Installation](#)  
[Oracle Installation](#)

## Upgrading

GECS is now available in both 32 and 64 bit versions. You MUST follow special instructions below if you are upgrading from 32 to 64 bit versions.

You can only convert data from versions 3.60, 4.00, 4.01, 4.10, 4.20, 4.21, 4.22 or 4.50 to this version. Older versions must first be upgraded to version 3.60, 4.00, 4.01, 4.10, 4.20, 4.21, 4.22 or 4.50.

You cannot 'upgrade' installations from versions 3.60 or 4.00 'in place'.

You must create a new installation of version 4.60 and then you can convert the version 3.60 or 4.00 data from your existing installation to this new installation using the GECSC360 or GECSC400 conversion utilities.

You cannot 'upgrade' installations from version 3.60 directly to the 64 bit version.

The conversion program, GECSC360.EXE, which is used to convert your data from v3.60 to v4.60 is a 32 bit Windows program. You can ONLY upgrade your data from v3.60 by first installing the 32 bit version of v4.60. Once your data is converted to v4.60 using the 32 bit version, you can then install the 64 bit version and access the converted data. Refer to the section in the manual titled 'MANUAL UPGRADE FROM GECS 3.6 TO 64 BIT GECS' or contact GECS technical support for more information.

You can 'upgrade' installations from version 4.01, 4.10, 4.20, 4.21, 4.22 or 4.50 'in place'.

The 'in place' upgrade will use your existing database tables and install programs over your existing GECS programs. During installation you will see a selection for 'upgrading'. This is for 'in place' upgrading from version 4.01, 4.10, 4.20, 4.21, 4.22 or 4.50. If you do not want to overwrite your existing installation of GECS 4.01, 4.10, 4.20, 4.21, 4.22 or 4.50, you can create a new database for version 4.60 and do a new installation of version 4.60 programs on the same machine as your older version. You can then convert a

backup copy your version 4.01, 4.10, 4.20, 4.21, 4.22 or 4.50 data using the GECSC401, GECSC410, GECSC420, GECSC421, GECSC422 or GECSC450 conversion utilities.

The manual contains complete instructions on 'converting' your data to version 4.60.

## Upgrading from 32 to 64 Bit Programs

The installation of 64 bit programs on a computer that has previously been running 32 bit programs is more of a new install than an upgrade. New 64 bit programs are installed and then the data is converted. There are 2 ways to upgrade from 32 to 64 bit programs

1. The first method involves the following steps:

- a. Run GECSBACK on your old system to backup your data.
- b. Create a new database in your database server.
- c. Create a new 64 bit ODBC DSN that points to the new database.
- d. Install GECS and indicate that you want to do a 'New Installation'.
- e. After the conversion run the GECSCxxx program to convert your backed up data to the new

database.

f. After the conversion is complete and you're comfortable your data was properly converted, uninstall the old version of GECS. Indicate you want to delete both shared programs and SQL tables.

2. The second method involves the following steps:

- a. Create a new 64 bit ODBC DSN that points to the existing database.
- b. Install GECS and indicate that you want to do a 'New Installation'. The installation program will recognize that there is existing data in the database and will indicate that the data will be converted.
- c. After conversion uninstall the old version of GECS. Indicate that you want to delete shared programs but DO NOT indicate that the SQL tables should be removed.

## Authentication Methods

This version of GECS can run using any of 4 different authentication methods.

There are two methods that rely only on data stored in GECS's data tables. These Authentication methods are selected in Workstation Setup as either 'Manual' or 'Use Current User'.

There are two methods which use both GECS's data and Active Directory (LDAP) data for authentication. These Authentication methods are selected in Workstation Setup as either 'Use AD Auto' or 'Use AD Alias.'

During the initial installation, you should only select one of the first 2 methods. If you wish to use either of

the methods that rely on Active Directory, you will need to setup some GECS data using one of the first two methods and then switch to one of the AD based methods. See the Online Manual for instructions on switching authentication methods.

# Pre Installation Steps

Before proceeding with the installation of this software you **MUST** have completed the following steps, depending on whether you are installing a SQL Server or Oracle based system.

## NEW INSTALLATION WITH MICROSOFT SQL SERVER

If you are installing a New Installation and intend to use the Microsoft SQL Server database server, you must complete the following pre-installation steps:

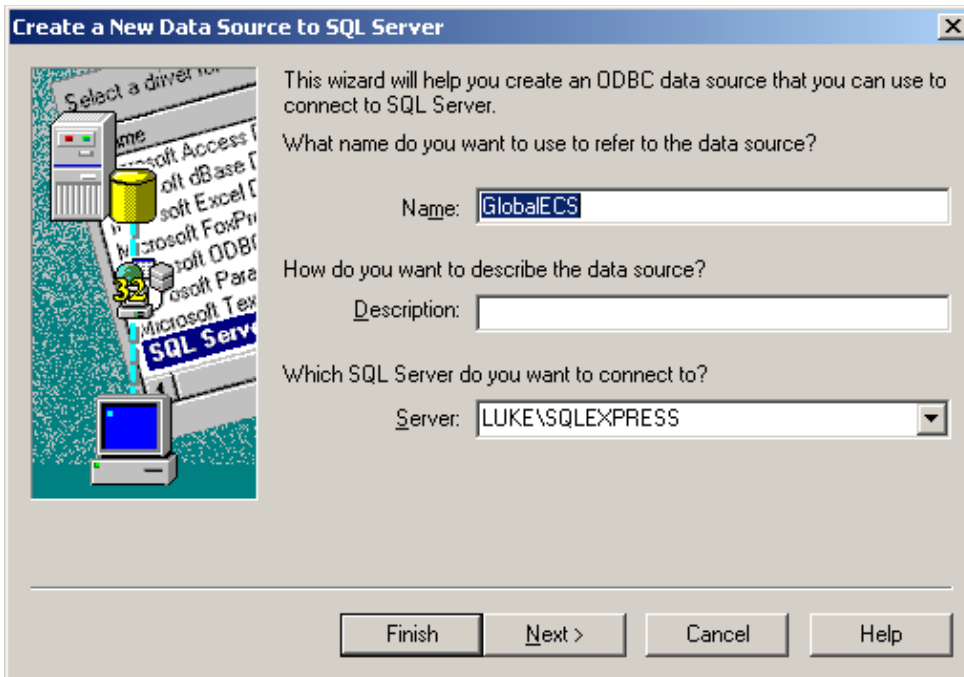
a) The SQL Server database server (SQL Server 2000 or higher) must be installed and running and you must know its name or address (i.e. LUKE\SQLEXPRESS). SQL Server should be configured with a maximum memory usage that is appropriate for your computer. See the GECS Manual for more information on setting the SQL Server maximum memory usage.

b) You must create the SQL Server database where the data will be stored and you must know its name (i.e. GlobalECS). You should be logged into SQL Server as a member of the 'sysadmin' fixed server role when you create the database for GECS to use. Logging into SQL Server as 'sa' will satisfy this requirement.

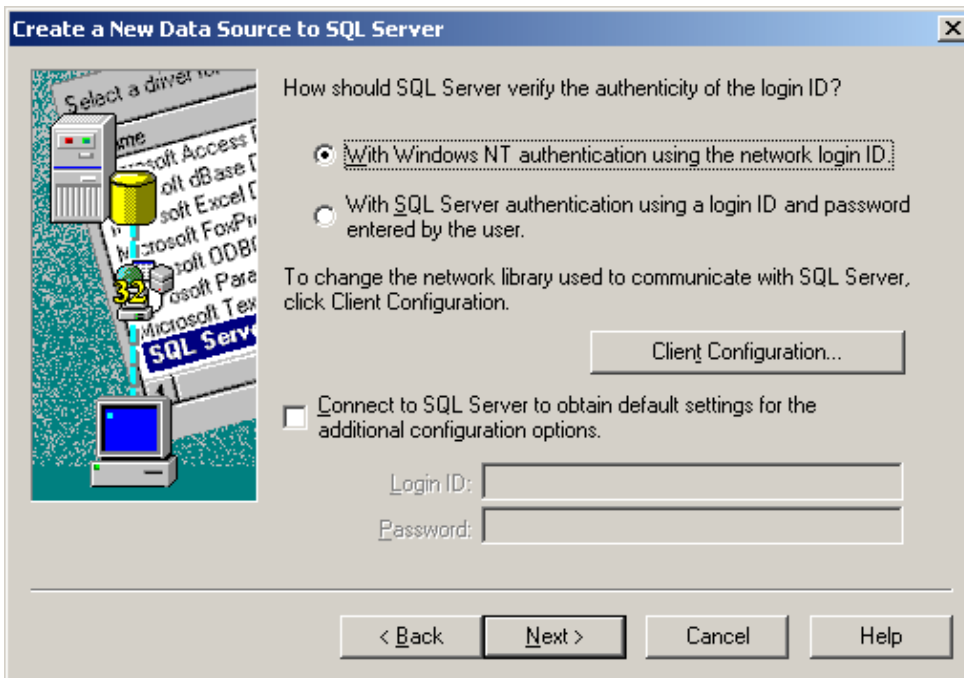
c) You must create the SQL Server users you intend to use and know their names and passwords. The user used for installation must have rights to create tables in the specified database and must be a member of the 'sysadmin' fixed server role. Logging into SQL Server as 'sa' will satisfy this requirement. Other users must be a member of the db\_owner database role and have rights to view and edit the data in the tables in the specified database.

d) The SQL Server ODBC driver must be installed on every computer that will run the GECS System Manager, Controller, Web Manager, Admin, Dashboard or utility programs.

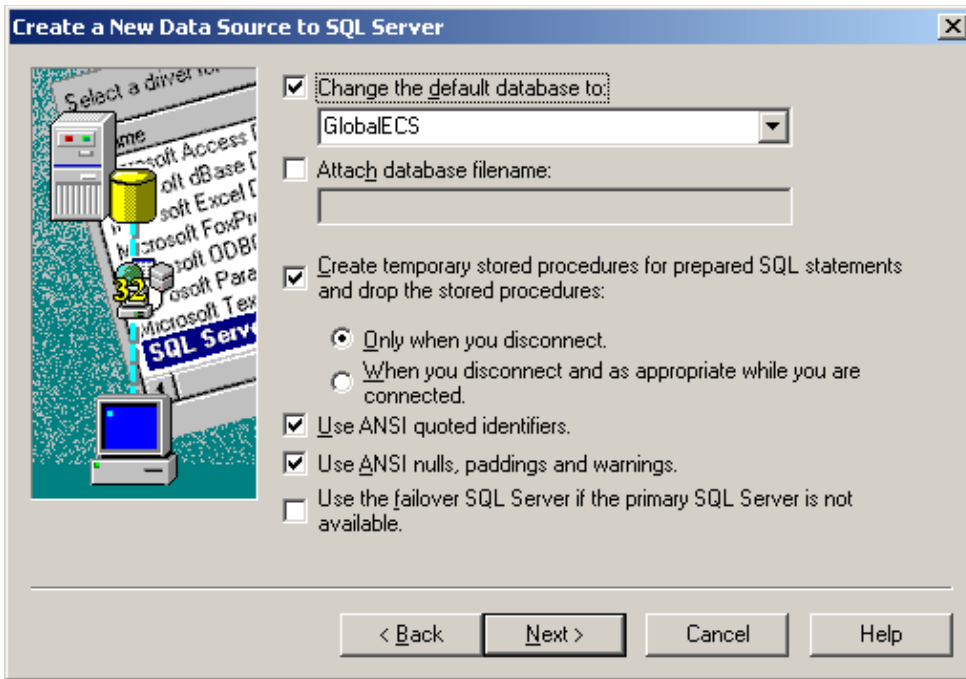
e) An ODBC data source (i.e. GlobalECS) must be created on every computer that will run the GECS System Manager, Controller, Web Manager, Admin, Dashboard or utility programs using the driver, database and server name or address from above. The ODBC data source does not need to be created on computers that will **ONLY** run the GECS Agent program. You must create a System data source on any computer that will run the GECS System Manager, Controller or Web Manager programs as services on the system account. When installing 32 bit GECS on 32 bit Windows or when installing 64 bit GECS on 64 bit Windows use the Data Sources program under Administrative Tools in Control Panel to create your ODBC data source. If you intend to install 32 bit GECS on 64 bit Windows, you must create the DSN using `C:\WINDOWS\SYSTEM32\ODBCAD32.EXE`.



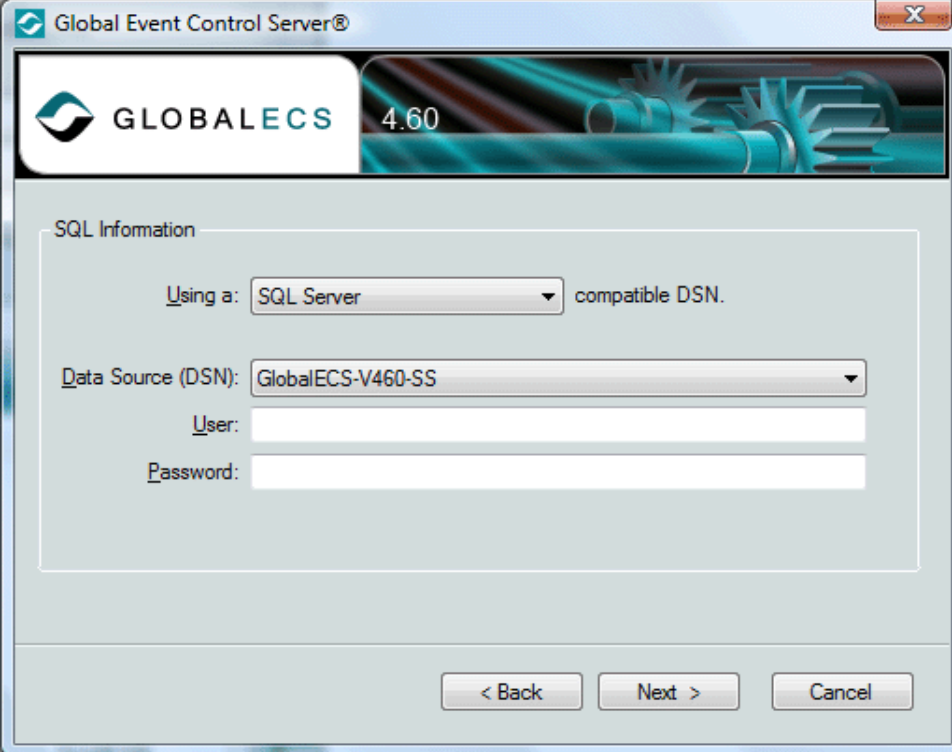
You can use either Windows authentication or SQL Server authentication when creating the DSN.



You must check the 'Change the default database to:' checkbox and enter the name of the database where the data will be stored (i.e. GlobalECS) as the default database to change to in the DSN. Be sure to NOT check the question 'Use regional settings when outputting currency, numbers, dates and times.' on the last page of questions. GECS will not operate correctly if this checkbox is checked.



f) When you begin to install Global ECS, you will need to indicate that you are using a SQL Server compatible DSN and enter the name of the DSN (i.e. GlobalECS) into the Global ECS Installation Program. You do not need to enter a username and password into the Global ECS Installation Program when using Windows Authentication. When GECS is installed it will create the necessary tables and other database objects in the database you specified in the DSN. This user must be member of the 'sysadmin' fixed server role. Logging into SQL Server as 'sa' will satisfy this requirement.



Global Event Control Server®

GLOBALECS 4.60

SQL Information

Using a: SQL Server compatible DSN.

Data Source (DSN): GlobalECS-V460-SS

User:

Password:

< Back Next > Cancel

For SQL Server Authentication, you will need to enter the username and password created above into the Global ECS Installation Program.

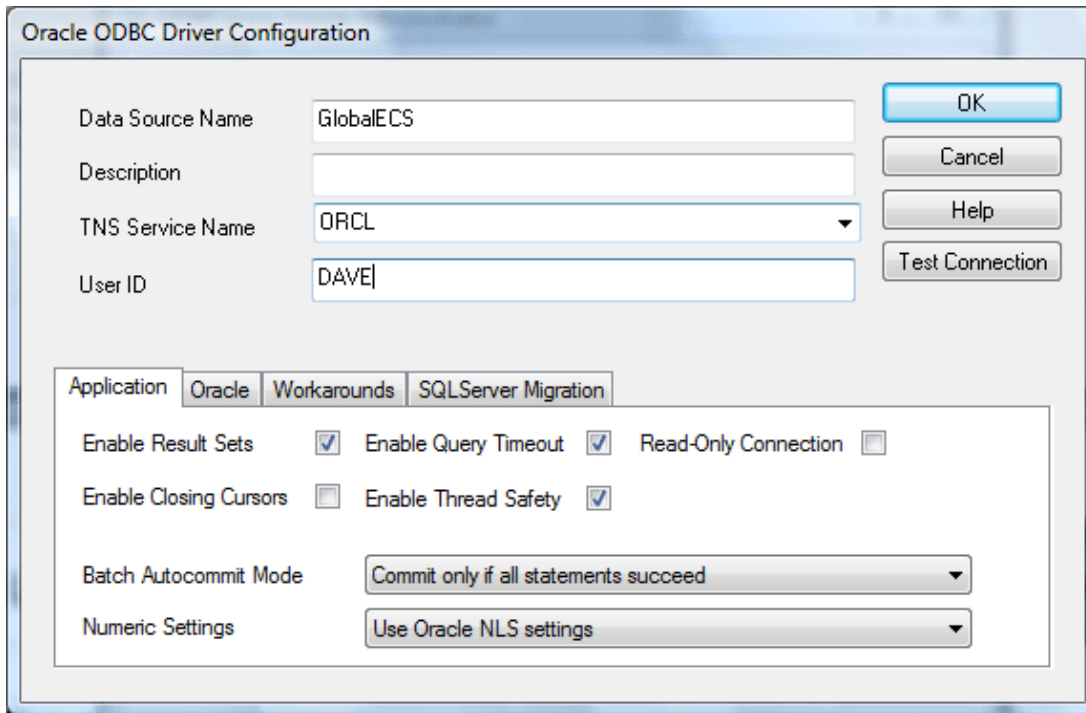
## NEW INSTALLATION WITH ORACLE SERVER

If you are installing a New Installation and intend to use the Oracle database server, you must complete the following pre-installation steps:

- a) The Oracle database server (version 8 or higher) must be installed and running and you must know its name or address.
- b) You must know the name of the Oracle schema where the data will be stored and create the user/schema if it doesn't exist.
- c) You must create the Oracle users you intend to use and know their names and passwords. The user used for installation must have rights to create tables in the specified schema. Other users must have rights to view and edit the data in the tables in the specified schema.
- d) The Oracle ODBC driver must be installed on every computer that will run the GECS System Manager, Controller, Web Manager, Admin, Dashboard or utility programs.
- e) An ODBC data source (i.e. GlobalECS) must be created on every computer that will run the GECS System Manager, Controller, Web Manager, Admin, Dashboard or utility programs using the driver, user and server name or address from above. The ODBC data source does not need to be created on computers that will ONLY run the GECS Agent program. You must create a System data source on any computer that will run the GECS System Manager, Controller or Web Manager programs as services on the system account. You must enter the address or name of the Oracle server and the user ID to use. When installing 32 bit GECS on 32 bit Windows or when installing 64 bit GECS on 64 bit Windows use the Data Sources program under Administrative Tools in Control Panel to create your ODBC data source. If

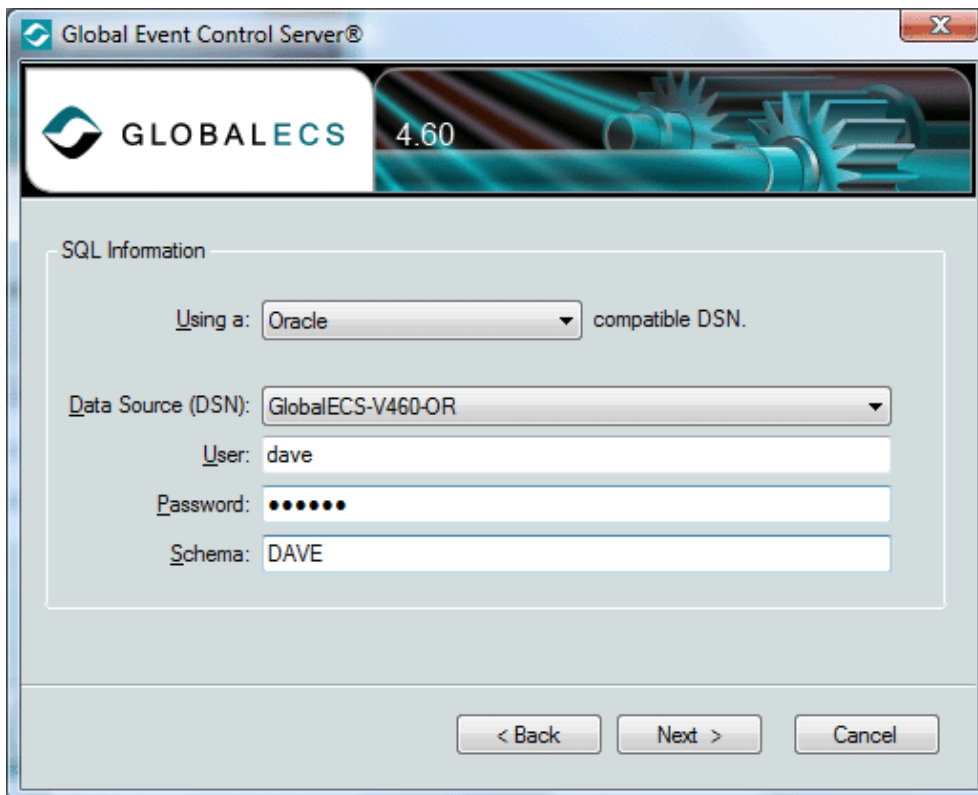
you intend to install 32 bit GECS on 64 bit Windows, you must create the DSN using

C:\WINDOWS\SYSTEM64\ODBCAD32.EXE.



The screenshot shows the "Oracle ODBC Driver Configuration" dialog box. It has a title bar with the text "Oracle ODBC Driver Configuration". The dialog contains several input fields and buttons. The "Data Source Name" field is filled with "GlobalECS". The "Description" field is empty. The "TNS Service Name" dropdown menu is set to "ORCL". The "User ID" field is filled with "DAVE". On the right side, there are four buttons: "OK", "Cancel", "Help", and "Test Connection". Below the input fields, there are four tabs: "Application", "Oracle", "Workarounds", and "SQLServer Migration". The "Oracle" tab is selected. Under the "Oracle" tab, there are several checkboxes: "Enable Result Sets" (checked), "Enable Query Timeout" (checked), "Read-Only Connection" (unchecked), "Enable Closing Cursors" (unchecked), and "Enable Thread Safety" (checked). There are also two dropdown menus: "Batch Autocommit Mode" set to "Commit only if all statements succeed" and "Numeric Settings" set to "Use Oracle NLS settings".

f) When you begin to install Global ECS, you will need to indicate that you are using an Oracle compatible DSN and enter the name of the DSN (i.e. GlobalECS) into the Global ECS Installation Program. You need to enter a username and password into the Global ECS Installation Program. You also need to enter the name of the Oracle Schema where the data should be stored.



The screenshot shows the "Global Event Control Server" installation dialog box. The title bar says "Global Event Control Server®". The dialog has a header with the "GLOBALECS 4.60" logo and a decorative background. Below the header, there is a section titled "SQL Information". In this section, there are several input fields: "Using a:" dropdown menu set to "Oracle" with the text "compatible DSN." next to it; "Data Source (DSN):" dropdown menu set to "GlobalECS-V460-OR"; "User:" text field filled with "dave"; "Password:" text field filled with seven dots; and "Schema:" text field filled with "DAVE". At the bottom of the dialog, there are three buttons: "< Back", "Next >", and "Cancel".